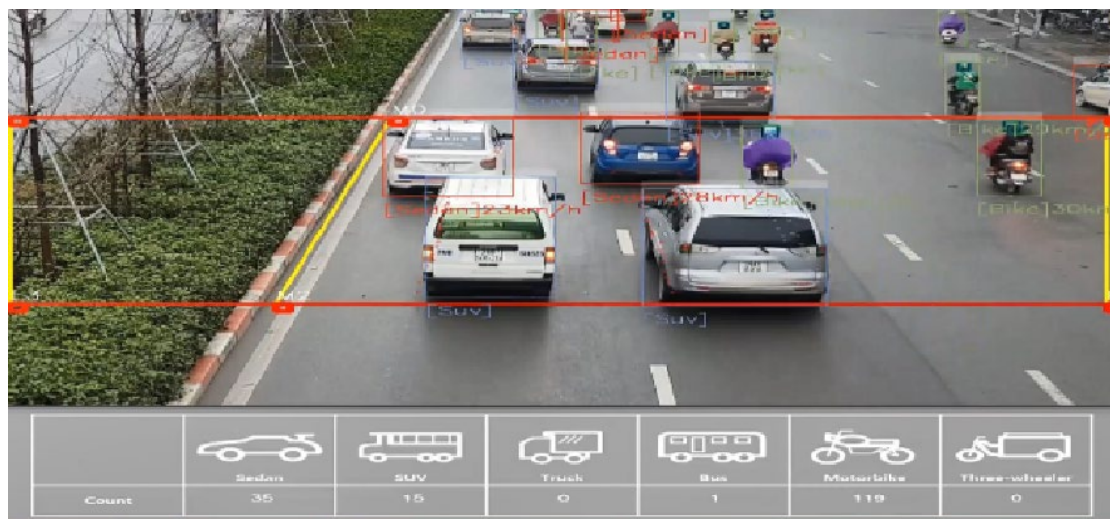


AEWIN partners with UNISEM to launch Edge AI solutions

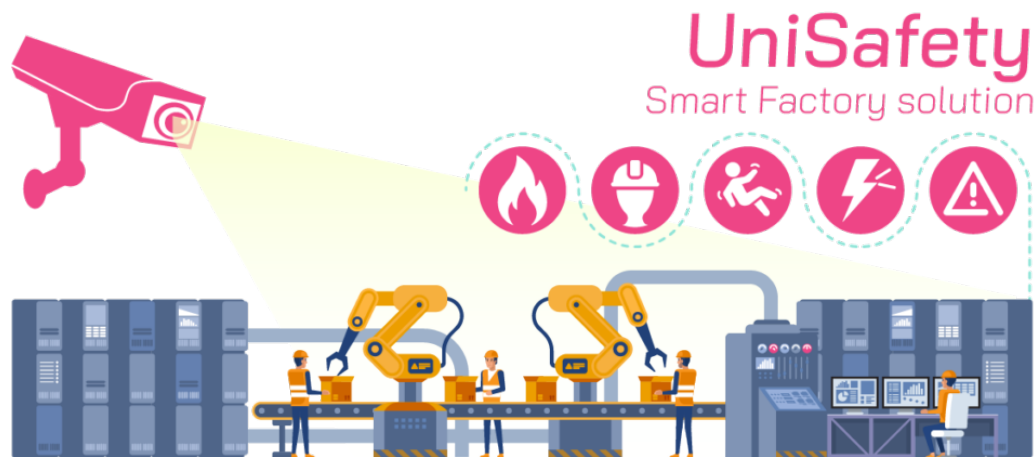
New Taipei City, Taiwan, June 03, 2021 – AEWIN announces partnership with UNISEM to leap into the AI-assisted future. UNISEM has taken its video analytics expertise and implemented it into useful real-world applications. These innovative AI solutions will change the landscape of how things are done in the near future.

UniTraffic is a piece of the future smart city. The traffic management technology utilizes deep learning-based image processing technology and multi-object detection that counts and classifies on-road objects such as pedestrians, automobiles, motorcycles, and trucks. At the same time, it can detect the license plate number of vehicles that violated traffic regulations. It has 99% accuracy for multiple object recognition in real-time. UniTraffic solution is useful for city planners by providing statistics and traffic flow patterns to plan future infrastructural development and upgrades. Likewise, for city administration and police departments, UniTraffic can minimize the time used for administering tickets and reduce personnel costs.



UniSafety is based on video analytics technology enhanced with deep learning that allows detection of various dangerous situations, such as fire, falling materials, abnormal process, crush injury, non-wearing of safety equipment, intrusion, etc., that can occur during the production process. In

the case of an accident or unusual situation, the system informs the safety supervisors via web-dashboard notification, text message, and loudspeaker. It also offers motion detection for detecting unauthorized access or intrusions. This can allow a more open working space without using barriers to keep out intruders.



“UNISEM’s vision aligned closely with AEWIN’s hardware development roadmap. The continued relationship allowed us the integrate designs optimal for UNISEM’s specific hardware requirements,” Charles Lin, CEO at AEWIN “Today’s announcement is the result of the past few years of cooperation. Through repeated testing and benchmarking, AEWIN has thoroughly investigated the performance characteristics of the UNISEM software suite that allows us to provide a workload-optimized total solution.”

“AEWIN has been exceedingly helpful in our quest to find the right hardware to host our solutions. AEWIN has not only provided insights in hardware design and selection, as well as taking our software in-house to provide customized firmware specific for our workloads,” said Jung Boo Eun, the Managing Director from UNISEM. “AEWIN hardware greatly outperforms other off-the-shelf hardware. We’re excited to deepen our partnership with AEWIN to provide workload-optimized solutions that will help you change the world.”

Learn More:

<http://www.aewin.com>

<https://www.UNISEMiot.com/>

<https://unisemiot.com/content/unitraffic-introduction/>

<https://unisemiot.com/content/unisafety-introduction/>



UniTraffic :

<https://www.aewin.com/application/ai-deep-learning-traffic-management-solution-unitraffic/>

UniSafety :

<https://www.aewin.com/application/ai-based-computer-vision-solution-unisafety/>