



碩達電子科技股份有限公司

CTK CONTACT ELECTRONICS CO., LTD.

Company Profile

Service

Customer Quality Satisfaction

Timely Delivery

Cost Effective



www.c-tk.com

About CTK



Professional connector manufacturer

Headquarter

CTK Contact Electronics Co.,LTD.

- 2004 established, 15 employees
- Marketing , Sales & R&D

Connector Production base

Contact Technology (KunShan) Co.,LTD.

- 2005 established; 150 employees
- RJ11 / RJ45 Type/ Transformer Jack
- OEM/ ODM developing

Cabling Production base

Ningbo Contact Technology Co.,LTD.

- 2006 established; 130 employees
- Keystone Jack/ Scanner/ Cabling products
- OEM/ ODM developing



ETL Certification

- Cat. 5e, Cat. 6, Cat. 6a
- UTP / FTP & 90 / 180 degree
- Hardware, Permanent Link, Channel
- Category 8 Link



intertek

ETL

3033 US Route 11
Contact: New York, 10045 USA
Phone Number: (800) 345-5861
Fax Number: (800) 345-5861
Web: www.intertek.com

ETL Verified Certificate of Conformance Number: 10321732CRT-015a

On the basis of the tests undertaken, the samples of the below product have been found to comply with the essential requirements of the referenced specifications at the time the tests were carried out.

Rendered to:
Ningbo Contact Technology Co., Ltd.
No. 8, Chang Feng Qiao Road, Lan Jian Street, Lianshupao Village
Yuyao, Zhejiang China
315313, China
Contact: Mr. Winds Tai

Product Tested:
3-Connector shielded channel
New Data

Compliance/Manufacturer/Part Number/Description:
1 CTR N451-010-01 Equipment Cords
2 CTR N452-010-01 Patch Panels
3 CTR N453-010-01 Patch Panels
4 CTR N454-010-01 Patch Panels

Standards/Specification: ANSI/TIA-568-C.2 Category 6e and ISO/IEC 11801-1 Class D with the applicable electrical transmission characteristics

Product/Literature: ETL Verified 3-Connector Channel to ANSI/TIA-568-C.2 Category 6e and ISO/IEC 11801-1 Class D, along with channel installation, and patch numbers

May Include: Continuing compliance to this specification is monitored through production testing, ongoing inspections by Intertek at the production facility and random sample testing.

Date Issued: May 10, 2018

Approved by: *Antonia Palacios*
Antonia Palacios, Project Engineer

This verification supersedes all previous verifications with the noted Verification/Report number(s) dated before this verification notice.

NOTE: This verification is part of the full test report(s) and should be read in conjunction with it.

intertek

ETL

3033 US Route 11
Contact: New York, 10045 USA
Phone Number: (800) 345-5861
Fax Number: (800) 345-5861
Web: www.intertek.com

ETL Verified Certificate of Conformance Number: 10321732CRT-009a

On the basis of the tests undertaken, the samples of the below product have been found to comply with the essential requirements of the referenced specifications at the time the tests were carried out.

Rendered to:
Ningbo Contact Technology Co., Ltd.
No. 8, Chang Feng Qiao Road, Lan Jian Street, Lianshupao Village
Yuyao, Zhejiang China
315313, China
Contact: Mr. Winds Tai

Product Tested:
3-Connector shielded channel
New Data

Compliance/Manufacturer/Part Number/Description:
1 CTR N451-010-01 Equipment Cords
2 CTR N452-010-01 Patch Panels
3 CTR N453-010-01 Patch Panels
4 CTR N454-010-01 Patch Panels

Standards/Specification: ANSI/TIA-568-C.2 Category 6e and ISO/IEC 11801-1 Class E with the applicable electrical transmission characteristics

Product/Literature: ETL Verified 3-Connector Channel to ANSI/TIA-568-C.2 Category 6e and ISO/IEC 11801-1 Class E, along with channel installation, and patch numbers

May Include: Continuing compliance to this specification is monitored through production testing, ongoing inspections by Intertek at the production facility and random sample testing.

Date Issued: January 23, 2018

Approved by: *Antonia Palacios*
Antonia Palacios, Project Engineer

This verification supersedes all previous verifications with the noted Verification/Report number(s) dated before this verification notice.

NOTE: This verification is part of the full test report(s) and should be read in conjunction with it.

intertek

ETL

3033 US Route 11
Contact: New York, 10045 USA
Phone Number: (800) 345-5861
Fax Number: (800) 345-5861
Web: www.intertek.com

ETL Verified Certificate of Conformance Number: 10321732CRT-012a

On the basis of the tests undertaken, the samples of the below product have been found to comply with the essential requirements of the referenced specifications at the time the tests were carried out.

Rendered to:
Ningbo Contact Technology Co., Ltd.
No. 8, Chang Feng Qiao Road, Lan Jian Street, Lianshupao Village
Yuyao, Zhejiang China
315313, China
Contact: Mr. Winds Tai

Product Tested:
3-Connector shielded channel
New Data

Compliance/Manufacturer/Part Number/Description:
1 CTR N451-010-01 Equipment Cords
2 CTR N452-010-01 Patch Panels
3 CTR N453-010-01 Patch Panels
4 CTR N454-010-01 Patch Panels

Standards/Specification: ANSI/TIA-568-C.2 Category 6a and ISO/IEC 11801-1 Class EA with the applicable electrical transmission characteristics

Product/Literature: ETL Verified 3-Connector Channel to ANSI/TIA-568-C.2 Category 6a and ISO/IEC 11801-1 Class EA, along with channel installation, and patch numbers

May Include: Continuing compliance to this specification is monitored through production testing, ongoing inspections by Intertek at the production facility and random sample testing.

Date Issued: January 23, 2018

Approved by: *Antonia Palacios*
Antonia Palacios, Project Engineer

This verification supersedes all previous verifications with the noted Verification/Report number(s) dated before this verification notice.

NOTE: This verification is part of the full test report(s) and should be read in conjunction with it.

intertek

ETL

3033 US Route 11
Contact: New York, 10045 USA
Phone Number: (800) 345-5861
Fax Number: (800) 345-5861
Web: www.intertek.com

ETL Verified Certificate of Conformance Number: 103544761CRT-003

On the basis of the tests undertaken, the samples of the below product have been found to comply with the essential requirements of the referenced specifications at the time the tests were carried out.

Rendered to:
CTK Contact Electronics Co., Ltd.
No. 27 Jilin Rd.
Zhongguo City, Taiwan
www.ck.com

Product Tested:
Category 6A Shielded Connector Hardware (Keystone Jack)

Modeling and/or Brand Name:
N451-010-01
The qualified mounting system for alien crosstalk is 11.24 inch (28.4mm) pitch panel part number N451-010-01

Standards/Specification: ANSI/TIA-568-2.0 Category 6A with the applicable electrical transmission characteristics

Product Labeling shall include: ETL Verified to ANSI/TIA-568-2.0 Category 6A and the product model(s) and/or brand name

Continuing compliance to this specification is monitored through production testing, ongoing inspections by Intertek at the production facility and random sample testing.

Date Issued: February 26, 2019

Approved by: *Antonia Palacios*
Antonia Palacios, Project Engineer

This verification supersedes all previous verifications with the noted Verification/Report number(s) dated before this verification notice.

NOTE: This verification is part of the full test report(s) and should be read in conjunction with it.

intertek

ETL

3033 US Route 11
Contact: New York, 10045 USA
Phone Number: (800) 345-5861
Fax Number: (800) 345-5861
Web: www.intertek.com

ETL Verified Certificate of Conformance Number: 103922434CRT-001b

On the basis of the tests undertaken, the samples of the below product have been found to comply with the essential requirements of the referenced specifications at the time the tests were carried out.

Rendered to:
CTK Contact Electronics Co., Ltd.
1F, No. 27, Jilin Rd., Zhongguo City, Taiwan
www.ck.com

Product Tested:
2-Connector permanent link
New Data

Compliance/Manufacturer/Part Number/Description:
1 CTR N451-010-01 Equipment Cords
2 CTR N452-010-01 Patch Panels
3 CTR N453-010-01 Patch Panels
4 CTR N454-010-01 Patch Panels

Standards/Specification: ISO/IEC 11801-1 Class 1 with the applicable electrical transmission characteristics

Product/Literature: ETL Verified 2-Connector Permanent Link to ISO/IEC 11801-1 Class 1, along with permanent link installation, and patch numbers

May Include: Continuing compliance to this specification is monitored through production testing, ongoing inspections by Intertek at the production facility and random sample testing.

Date Issued: June 28, 2019

Approved by: *Antonia Palacios*
Antonia Palacios, Project Engineer

This verification supersedes all previous verifications with the noted Verification/Report number(s) dated before this verification notice.

NOTE: This verification is part of the full test report(s) and should be read in conjunction with it.

Our Products

Road Map Through the years



2005

2007

2009

2011

2013

2015

2017

Today

PCB Jacks Series

PCB Modular Jack
High Speed PCB Jack



Cat.3
RJ Jack



RJ11+RJ45



Cat.5
RJ Jack



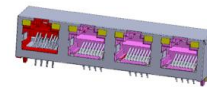
Cat.5e



Cat.6



Cat.6a



Multiport and Multi-color jack

PCB Modular Jack

High Speed PCB Jack

Telecom Series



Cat.3
Keystone



Cat.5
Keystone



Cat.5e
Keystone



Cat.6
Keystone



Cat.6 Patch Panel



Cat.6a
Keystone Jack



Intelligent Patch Panel



Network Scanner



Slim Type



Wall Plate

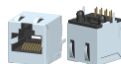
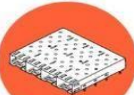


Coupler



Cat.8
Keystone

Transformer Jack & Others



Transformer Jack



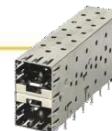
Others



USB / SATA



SFP 1 x N



SFP 2 x N




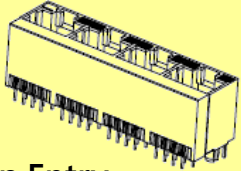
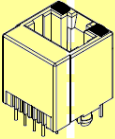
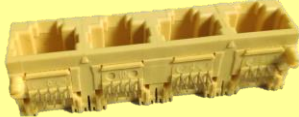
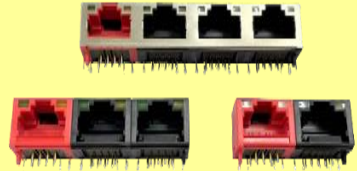
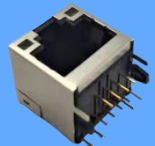
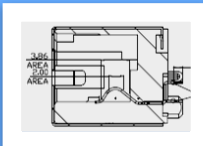
Tooling

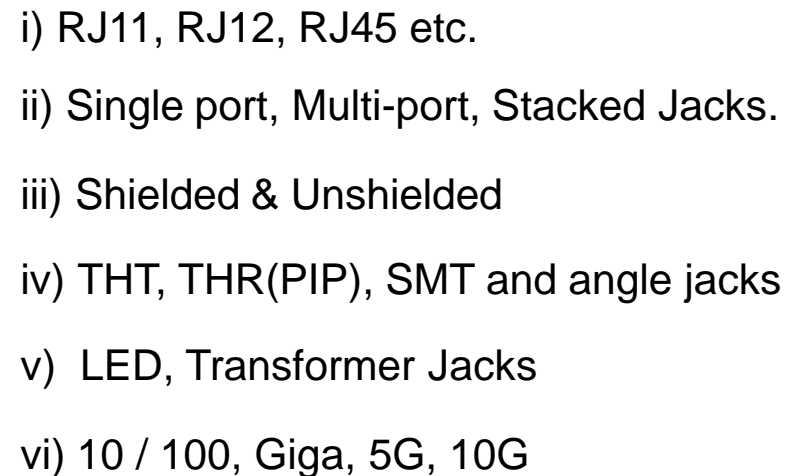
Main Business



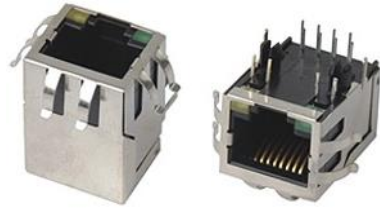
- Wide range of RJ connectors
- 10/100, Giga, 5G, 10G Transformer Jack
- Cat.5e, Cat.6, Cat.6a, Cat.8 for network cabling system
- Plastic molds / Stamping dies developing
- Auto assembly machine fabrication
- OEM/ODM projects handling

2021 Roadmap of RJ/ Transformer

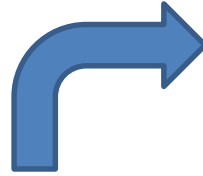
	2021 Q1	2021 Q2	2021 Q3	2021 Q4
RJ 45	 <p>Side Entry Series 1X1 & 1XN SMT</p>	 <p>Top Entry Series 1X4</p>	 <p>Top Entry Series 1X1 PiP</p>  <p>Side Entry Series 1X1 & 1XN PiP</p>	 <p>Multiport Multi-color Jack</p>
Transformer	<p>2.5G Transformer Top Entry</p>	<p>2.5G/5G Transformer Jack Side Entry</p>		<p>10G Transformer Jack</p>
High Speed	 <p>High Speed Jack With LED type</p>	 <p>High Speed Top Entry RJ45 LED Jack</p>	<p>High Speed RJ45 With PiP type</p>	<p>High Speed RJ45 1XN type</p>

[illegible]

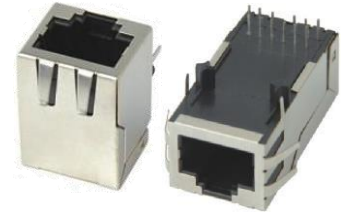
High-Speed RJ45 2.5G ~ 10G & POE/ POE+/ POE++ Solutions



Single Port



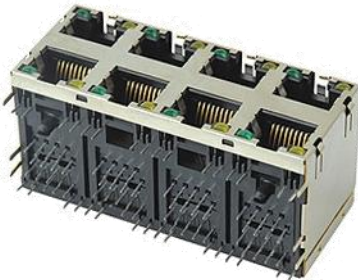
Single Port



1XN

Without LED
/ With LED

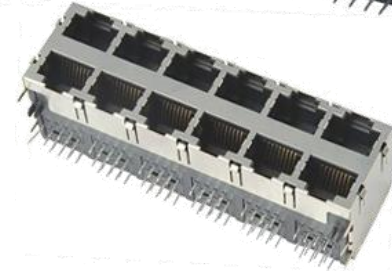
1XN



2XN



2XN



CTK PN

Specifications

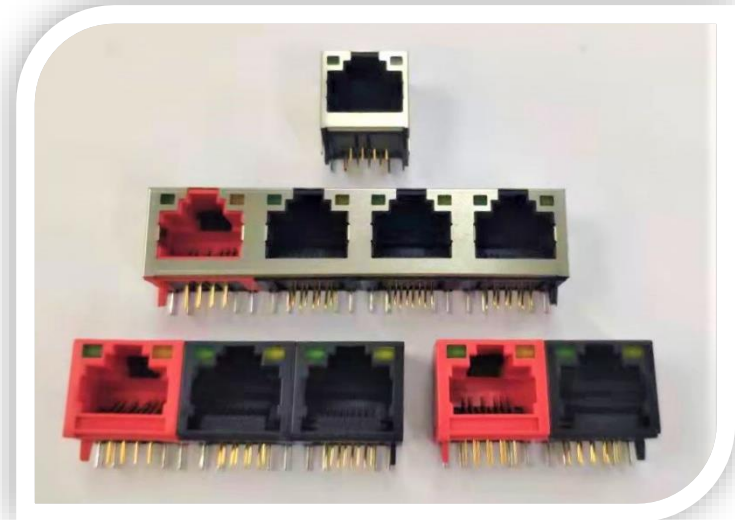
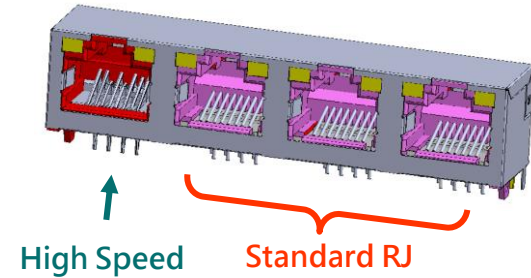
Performance

K3T1X-145-01	Top Entry 1X1 BK High Temp	2.5G
K3T12X-030-56	Side Entry 1X1 BK High Temp W/LED W/O EMI	2.5G
K3T1X-XXX-01	Side Entry 1X1 BK High Temp W/OLED W/ EMI	5G
K3T1X-153-01	Side Entry 1X1 BK W/OLED W/ EMI	10G
K3T1X153-XX	Side Entry 1X1 BK W/LED	10G
K3TDX-XXX-XX	Side Entry 2X4 PORT BK	2.5G
K3TDX-XXX-XX	Side Entry 2X4 PORT BK	5G

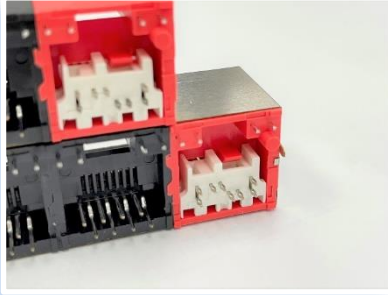


Combo RJ45 Connector

- Composite high-speed and standard speed RJ45 connectors
- Space saving and easy to mount
- Transfer speed of High-Speed port is up to 2.5Gbps
- 90/ 180 degree are available
- Combo transmission speeds ports could easily be verified by multicolor housing
- Shielded/Unshielded options are available
- LED color options are available
- Operating temperatures: -40°C to 85°C
- Supports PoE applications
- UL recognized/ RoHS compliant

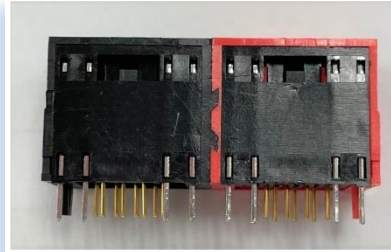


Combo RJ45 Connector



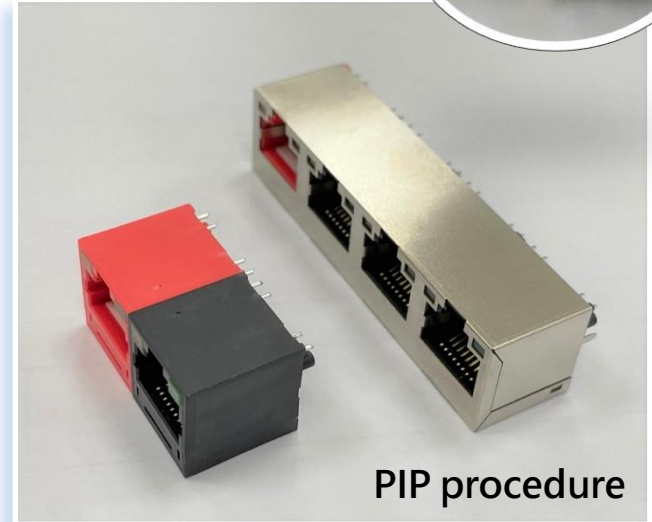
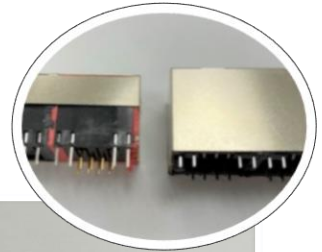
Stamp/ Round pins

Modular assembly



Applications:

- Storage devices
- Servers
- Switches/ Routers
- Workstations



PIP procedure

Structured Cabling System

Intelligent Structured Cabling System

1. Intelligent Patch Panel
2. Switch
3. Network Controller
4. Intelligent Fiber/Copper patch cord

Structured Cabling System

1. Patch Panel Series
2. Patch Cords
3. Keystone Jack

Accessories

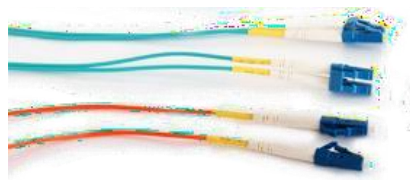
1. Wall Plate



▶ Intelligent Structured Cabling System



Cable Management



LC Fiber Patch Cord



Intelligent LC Fiber Patch Cord



Intelligent Copper Patch Cord



Intelligent LC Fiber Patch Panel

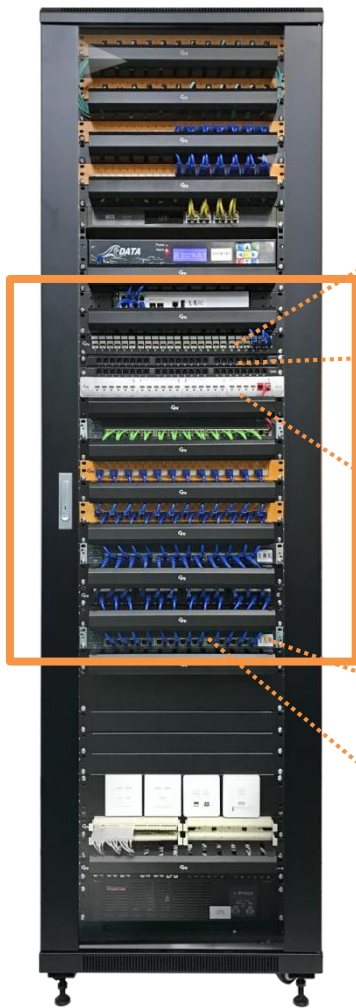


Intelligent Patch Panel



Network Controller

► Cabling System



1 Cat.6 48 Ports Patch Panel



2 0.5U 24 Ports Patch Panel



3 Cat.6A & Cat.6 24 Ports Patch Panel with Keystone Jack



4 Cat.6A & Cat.6 24 Ports Patch Panel



5 Cat.5e & Cat.6 Patch Cord



▶ Accessories

86 Type



Single port



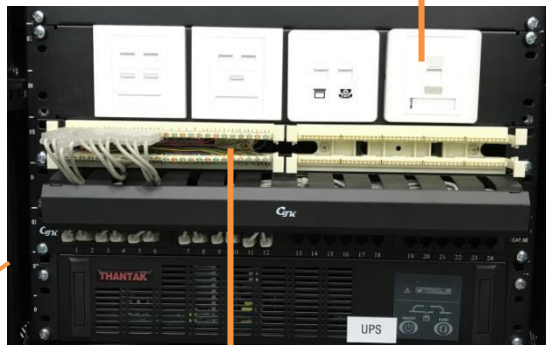
Double ports



Triple ports



Quad ports



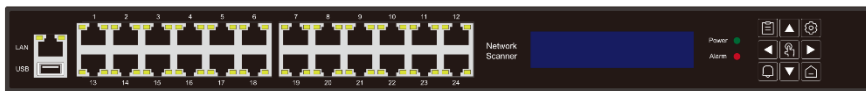
Cable management



120 Type



24 Ports Panel
Connect to 1U
Network Scanner



Network Scanner

Intelligent Patch Panel

- ▶ Straightforward installation, allows any of individual jack to be removed



Intelligent Patch Panel



- Intelligent patch panel with cage (coiling box attached)



- 1U intelligent patch panel (to be used with 1U networking scanner)



Networking Scanner

- Documentation
- Asset management
- Enhanced security
- Streamlined work orders
- EN& CH Bi-language



Intelligent Cabling Software

Production Capabilities



Manual/ Auto
assembly lines



Injection department

Production Capabilities

Stamping department

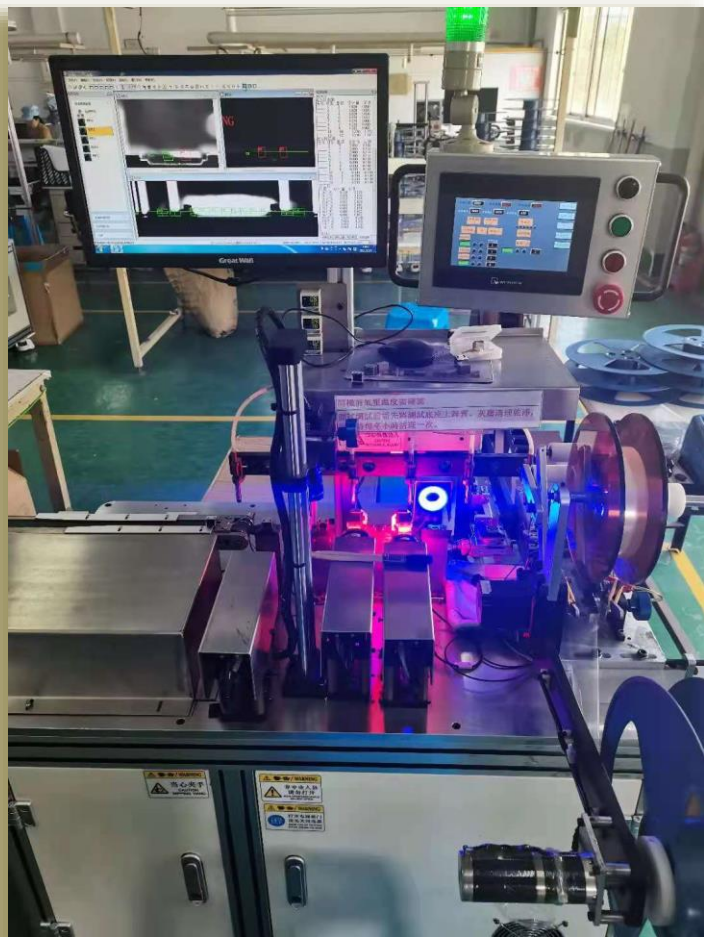


Injection department

180 degree automatic assembly
machine for module



Automatic assembly machine for
patch panel



Packaging inspection machine



Automatic insertion machine



Tooling Fabrication



▲ Temperature with Humidity Tester



▲ X-ray fluorescence



▲ X-Ray for Plating thickness



▲ Salt Spray Tester



Hi-pot Tester



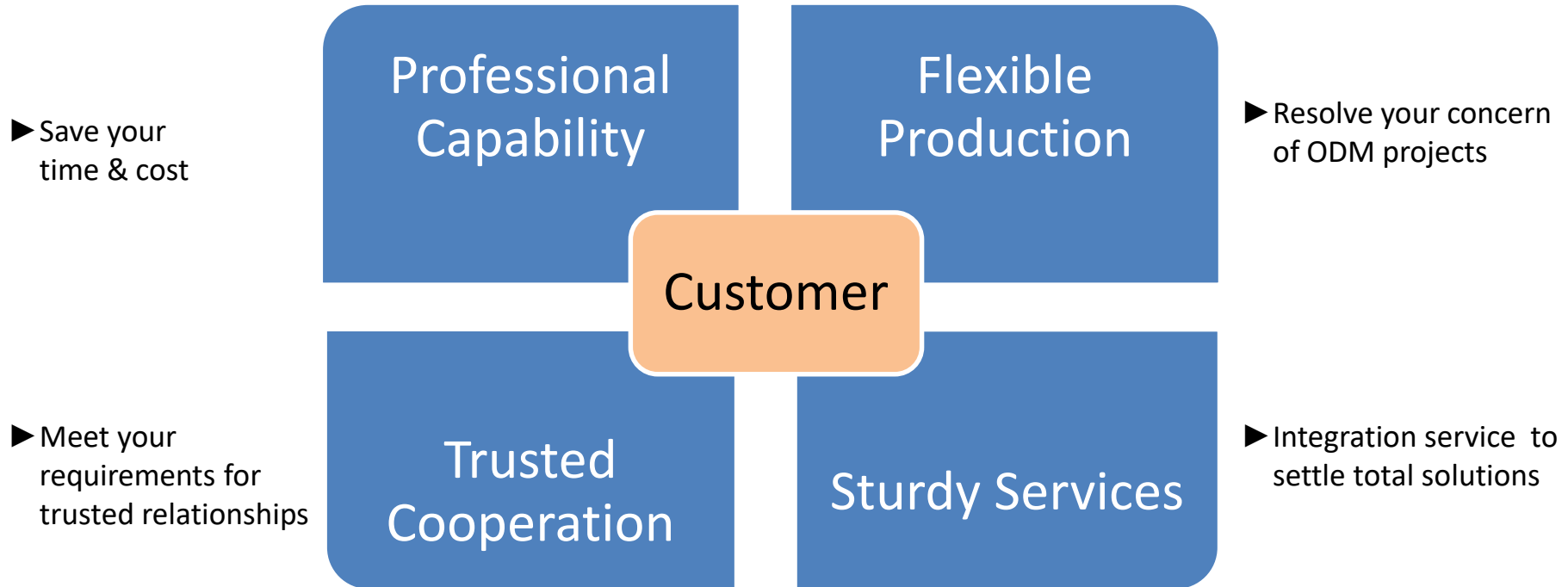
Fluke Tester



High Frequency Network Analyzer

Lab Facilities

Our Benefits- why CTK?





碩達電子科技股份有限公司

CTK CONTACT ELECTRONICS CO., LTD.

Thank You



www.c-tk.com