

Specifications



Model No.	Domi Series		S Series	
	Domi800		S820	S810
Features	<ul style="list-style-type: none"> * Ultra-compact * Economical & simple * Dual displays * Solid aluminum chassis * Support GbE LAN, optional for 2nd GbE LAN * Optional WiFi & Antenna kit * Support VESA mount & Kensington lock 		<ul style="list-style-type: none"> * Compact & slim * Performance & multimedia application * Dual displays * Support GbE LAN or Fiber LAN * Support USB 3.2 Gen 2 Type-C * Optional TPM 2.0, WiFi * Optional foot stand (POF) with multiple configurations * Supports VESA mount & Kensington lock 	<ul style="list-style-type: none"> * Compact & slim * Performance & multimedia application * Dual displays * Support GbE LAN or Fiber LAN * Optional TPM 2.0, WiFi * Optional foot stand (POF) with multiple configurations * Supports VESA mount & Kensington lock
CPU	Intel® Celeron® N3160 Quad-Core 1.6GHz processor		Intel® Celeron® J6412 Quad-Core 2.0GHz processor	Intel® Celeron® J4125 Quad-Core 2.0GHz processor
RAM	1 X DDR3L SO-DIMM 8GB Max		1 X DDR4 SO-DIMM 16GB Max	1 X DDR4 SO-DIMM 8GB Max
Storage Interface	On-board eMMC (8GB~32GB, optional) 1 X mSATA for SSD		On-board eMMC (8GB~32GB, optional) 1 X mSATA for SSD	On-board eMMC (8GB~32GB, optional) 1 X mSATA for SSD
I/O	USB2.0	2	4	4
	USB3.2 Gen1	2 2 X Type-A connector	4 2 X Type-A connector 1 X USB 3.2 Gen 2 Type C connector (Data only) 1 X Type-C connector* * Connecting to POF for I/O expansion or working for data transferring in USB3.2 Gen1 speed with no foot stand	3 1 X Type-A connector 1 X USB 3.2 Gen 1 Type-C connector (Data only) 1 X Type-C connector* * Connecting to POF for I/O expansion or working for data transferring in USB3.2 Gen1 speed with no foot stand
	Mic-in	1	1 X Combo Jack	1
	Line-out	1		1
	DP	2 (DP 1.1a)	2 (DP 1.4)	2 (DP 1.2a)
	HDMI	N/A	N/A	N/A
	GbE LAN	1 (2 nd GbE LAN, optional)	1 (Fiber GbE port, optional)	1 (Fiber GbE port, optional)
	COM	1 (Optional)	N/A	N/A
	TPM	(fTPM, optional)	Yes (dTPM2.0, optional)	Yes (dTPM2.0, optional)
	Peripheral		POF (1 X Parallel , 1 X COM)	POF (1 X Parallel , 1 X COM)
Wireless Connectivity	Optional M.2 2230 WiFi module with 2 X external antennas		Optional M.2 2230 WiFi module with 2 X external antennas	Optional M.2 2230 WiFi module with 2 X external antennas
Smart Card Reader	N/A		N/A	N/A
Power	12V 24W adapter		12V 48W adapter	12V 48W adapter
Dimension (W X H X D)	130 X 32 X 125 mm (0.6L)		42 X 201 X 153 mm (1.29L)	42 X 201 X 153 mm (1.29L)

Specifications are subject to change without notice.

Specifications



Model No.		G Series G600	All-in-One Series TC238-JL	Laptop Thin Client TC156-AN
Features		<ul style="list-style-type: none"> * Flexible & multi-ports * High performance & graphic intensive application * Support AVX2 instruction set for PCoIP Ultra S/W client. * Four 4K displays * Optional Fiber LAN and COM * Optional TPM2.0, WiFi module * Optional smart card reader * Support VESA mount & Kensington lock 	<ul style="list-style-type: none"> * Elegant & space save LCD integrated thin client * Performance & multimedia application * Smart Display Module (SDM-L) * 23.8" 1080P LED backlight * Frameless bezel * Optional 5M webcam * Support up to 4K@60Hz resolution for connected display * Optional WiFi module * Support VESA mount & Kensington lock 	<ul style="list-style-type: none"> * Portable & work anywhere * Latest Intel® processor platform * 15.6" 1080P Full HD display * Support up to 4K@60Hz resolution for connected display * 2M Webcam * Support Type-C full function (including DP and PD) * Support TPM 2.0 (Trust Platform Module) * Support HDMI 1.4 * WiFi6 built in
CPU		AMD V1202B Dual -Core 2.3GHz processor	Intel® Celeron® N5100 Quad-Core 1.1GHz processor	Intel® Alder Lake N100 Quad-Core processor upto 3.40GHz
Display	Size	N/A	23.8"	15.6"
	Resolution	N/A	1920 x 1080	1920 x 1080
	Brightness	N/A	250 cd/m ²	250 cd/m ²
RAM		2 X DDR4 SO-DIMM 32GB Max	1 X DDR4 SO-DIMM 16GB Max	1 X DDR4 SO-DIMM 8G
Storage Interface		On-board eMMC (8GB~32GB, optional) 1 X mSATA for SSD	On-board eMMC (8GB~32GB, optional) 1 X mSATA for SATAIII SSD	X 1 M.2 2280 M key 128G SATA SSD
I/O	USB2.0	5	2	N/A
	USB3.2 Gen 1	3 2 X Type-A connector 1 X Type-C connector (Data only)	2 2 X Type-A connector	4 3 X Type-A connector 1 X Type-C (Full function)
	Mic-in	1	1 X Combo Jack	1 X Combo Jack
	Line-out	1		
	DVI	N/A	1 (DVI-D)	N/A
	DP	4 (DP1.2a)	1 (DP 1.1a)	N/A
	HDMI	N/A	N/A	1 (HDMI 1.4)
	GbE LAN	1 (Fiber GbE port, optional)	1	1
	COM	1 (USB2.0 X 2, alternative)	N/A	N/A
	TPM	Yes (dTPM 2.0, Optional)	Yes (dTPM 2.0, Optional)	Yes (dTPM 2.0)
	Card Slot	1 X Smart Card reader(Optional)	N/A	1 X micro SD card
Wireless Connectivity		Optional M.2 2230 WiFi module with 2 X external antennas	Optional M.2 2230 WiFi module with 2 X external antennas	RTL8852BE WiFi6 Combo with 2 internal antennas
WebCam		N/A	Full HD 5MP Webcam with Microphone	Full HD 2MP Webcam with Microphone
Power		12V 60W adapter	19V 65W adapter	45W Type-C PD adapter
Dimension (W X H X D)		53 X 230 X 210 mm (w/o stand)	539 X 343 X 48 mm (w/o stand)	368 X 244 X 21.6 mm (w/o rubber foot)

Specifications are subject to change without notice.

Clientron Corp.

3F, No. 75, Sec 1, Sintai 5th Rd., Sijhih Dist., New Taipei City 221432, Taiwan (R.O.C.)

Tel: +886-2-26987068 E-mail: service@clientron.com

Specifications



		PT2710	PT2700	PT2500	PT2000
Display	LCD Display Size	15.6" TFT LCD	15.6" TFT LCD	15" TFT LCD	15" TFT LCD
	Max. Resolution	1920 x 1080	1920 x 1080	1024 x 768	1024 x 768
Touch Panel		P-cap	P-cap	5 Wire Resistive or P-cap	5 Wire Resistive or P-cap
Processor		Intel® Celeron® Elkhart Lake J6412	Intel® Whiskey Lake Core™ i5-8365UE Intel® Whiskey Lake Core™ i5-8265U Intel® Whiskey Lake Core™ i3-8145UE Intel® Celeron® Processor 4305UE	Intel® Core™ i7-7500U up to 3.50 GHz Intel® Core™ i5-7200U up to 3.10 GHz Intel® Core™ i3-7100U up to 2.40 GHz	Intel® Celeron® J1900 2.0GHz
Memory		DDR4 up to 64GB	DDR4 up to 64GB	DDR4 up to 16GB	DDR4 up to 16GB
Storage		1 x M.2 NVMe/ M.2 SATAIII SSD 1 x M.2 SATAIII SSD	1 x M.2 NVMe/ M.2 SATAIII SSD 1 x M.2 SATAIII SSD	2.5" SATAIII HDD or SSD	2.5" SATAIII HDD or SSD
I/O Connect ors	USB 3.0	USB 3.2 Gen1 x 2 (Rear) x 1 (Type-C)	USB 3.2 Gen1 x 2 (Rear) x 1 (Type-C)	4	1
	USB 2.0	4 (rear), 1 (side)	4 (rear), 1 (side)	2 (rear), 2 (side)	3
	5V/12V Powered COM	3 x RJ45	3 x RJ45	3 x DB9	2 x DB9
	WiFi	1 E-Key (Supports WiFi & Bluetooth)	1 E-Key (Supports WiFi & Bluetooth)	N/A	N/A
	GbE LAN	1	1	1	1
19V Power Supply		90W adapter	90W adapter	90W adapter	60W adapter
Dimension (W x H x D)		365 x 220 x 310 mm	365 x 220 x 310 mm	364 x 339 x 229 mm	364 x 339 x 229 mm



		Ares850	Ares550	PSL760	PSL540
Display	LCD Display Size	15" TFT LCD	15" TFT LCD	14" TFT LCD	14" TFT LCD
	Max. Resolution	1024 x 768	1024 x 768	1366 x 768	1366 x 768
Touch Panel		P-cap	P-cap	P-cap	P-cap
Processor		Intel® Core™ Alder Lake i3-1215U up to 4.40 GHz Intel® Core™ Alder Lake i5-1245UE up to 4.40 GHz	Intel® Celeron® Elkhart Lake J6412	Intel® Whiskey Lake Celeron® 4305UE Intel® Whiskey Lake Core™ i3-8145UE	Intel® Celeron® N3160 1.6GHz
Memory		DDR4 up to 64GB	DDR4 up to 64GB	DDR4 up to 16GB	DDR3L up to 8GB
Storage		1 X M.2 SSD NVME PCI-e Gen3 x 4 1 X M.2 SSD only SATA	1 X M.2 SSD NVME PCI-e Gen3 x 4 1 X M.2 SSD only SATA	M.2 SATAIII SSD	M.2 SATAIII SSD
I/O Connect ors	USB 3.0	USB 3.2 Gen1 x3	USB 3.2 Gen1 x3	4	4
	USB 2.0	5 (rear x 4, side x 1)	5 (rear x 4, side x 1)	N/A	N/A
	5V/12V Powered COM	3 x RJ45	3 x RJ45	2 x DB9	2 x DB9
	WiFi	x1 E-Key (Supports WiFi & Bluetooth)	x1 E-Key (Supports WiFi & Bluetooth)	WiFi+BT (optional)	WiFi+BT (optional)
	GbE LAN	1	1	1	1
19V Power Supply		90W or 150W adapter	60W, 90W (option) or 150W (option) 19V lockable 3-pin power adapter	90W adapter	90W adapter
Dimension (W x H x D)		333 x 220 x 346 mm	333 x 220 x 346 mm	352 x 129 x 313 mm	352 x 129 x 313 mm

Specifications



		PST550	PST750	PST650
Display	LCD Display Size	15" TFT LCD	15" TFT LCD	15" TFT LCD
	Max. Resolution	1024 x 768	1024 x 768	1024 x 768
Touch Panel		P-cap	5 Wire Resistive or P-cap	5 Wire Resistive or P-cap
Processor		Intel® Celeron® Elkhart Lake J6412	Intel® Core™ i7-7500U up to 3.50 GHz Intel® Core™ i5-7200U up to 3.10 GHz Intel® Core™ i3-7100U up to 2.40 GHz	Intel® Celeron® J1900 2.0GHz
Memory		DDR4 up to 64GB	DDR3L up to 16GB	DDR3L up to 8GB
Storage		1 X M.2 SSD NVME PCI-e Gen3 x 4 1 X M.2 SSD only SATA	2.5" SATAII HDD or SSD	2.5" SATAII HDD or SSD
I/O Connect ors	USB 3.0	USB 3.2 Gen1 x3	4	1
	USB 2.0	5 (rear x 4, side x 1)	2 (rear), 2 (side)	3
	5V/12V Powered COM	3 x RJ45	3 x DB9	2 x DB9
	24V DC out	1	1	1
	GbE LAN	1	1	1
3" Thermal Printer		1	1	1
19V Power Supply		150W adapter	150W adapter	150W adapter
Dimension (W x H x D)		364 x 410 x 257 mm	364 x 410 x 257 mm	364 x 410 x 257 mm

POS Monitor

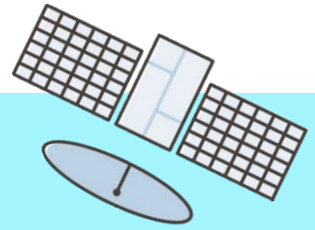


		PM5500	PM7000	PM1000
Display	Display Size	15" TFT LCD	15.6" TFT LCD	9.7" TFT LCD
	Touch Screen	P-cap (option)	P-cap (option)	P-cap (option)
	Optimal Resolution	1024 x 768	1920 x 1080	1024 x 768
	Brightness	350 cd/m ²	350 cd/m ²	350 cd/ m ²
	Contrast Ratio	2500: 1 (Typ.)	1000: 1 (Typ.)	500: 1 (Typ.)
I/O Connectors	USB Type-C	x 1 (for display)	x 1 (for display)	N/A
	USB 2.0	x 1	x 2 (rear x 1, side x 1)	X 1
	12V DC in	x 1 (for standalone)	x 1 (for standalone)	x 1 (for standalone)
Power Supply		DC 12V 24W power adapter (for standalone) 5V from Type-C (as 2 nd display)	DC 12V 36W power adapter (for standalone) 5V from Type-C (as 2 nd display)	DC 12V 24W external power adapter (for standalone) 5V from USB (as 2 nd display)
OSD Control		+ / - (brightness control)	+ / - (brightness control)	Power On / Off with LED Indicator and OSD function control
Mounting		VESA mount (75 x 75 mm)	VESA mount (75 x 75 mm)	VESA mount (75 x 75 mm)
Dimension (W x H x D) mm		347 x 271 x 334 (with stand)	365 x 220 x 310 mm (with stand)	232 x 225 x 140 mm (with stand)

Specifications are subject to change without notice.



中国认可
管理体系
MANAGEMENT SYSTEM
CNAS C002-M



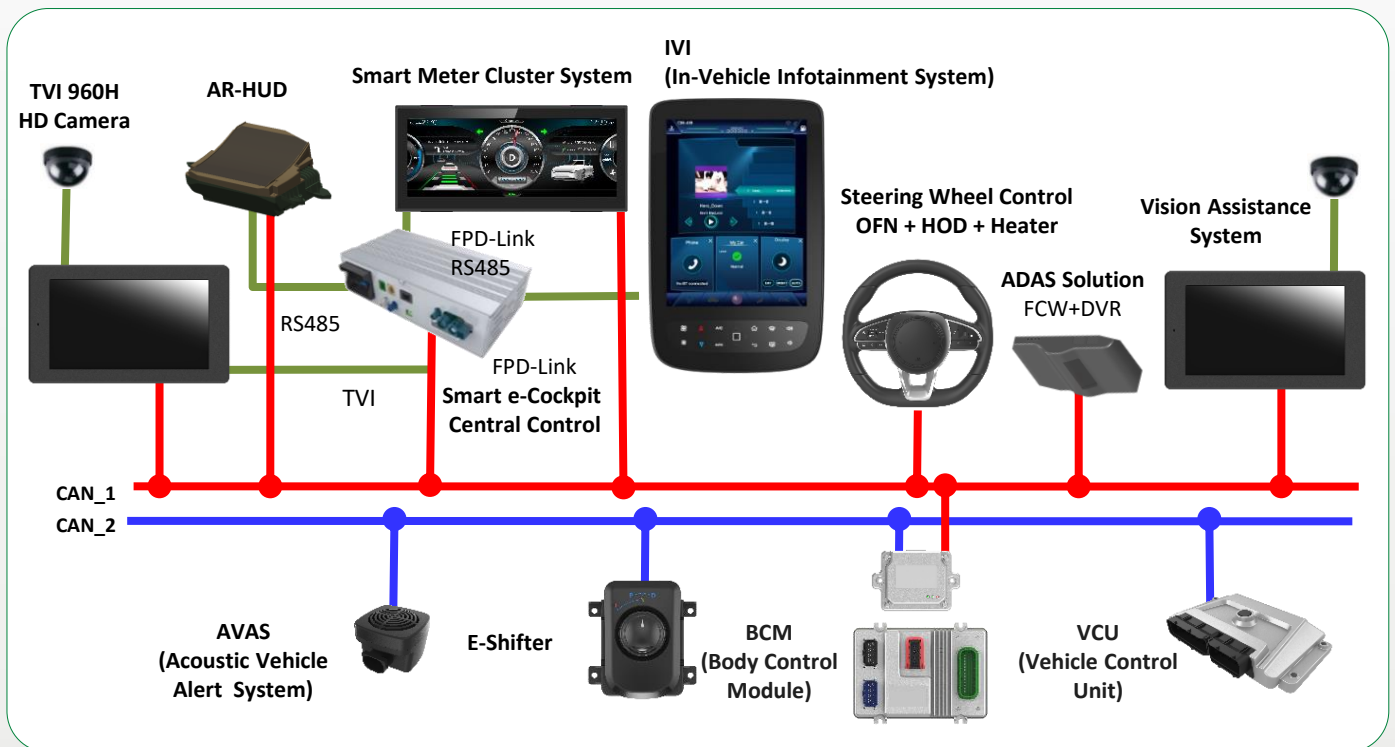
The New Era of Smart Vehicle



Development Platform for Electric Vehicle Parts



Smart e-Cockpit of Electric Vehicles



Based in Taiwan, Clientron has been dedicated to the automotive industry on system integration services and has expertise in the technology of integrating the sub-systems that communicates with all the components and applications within an electric vehicle.

With integrated in-vehicle infotainment systems as the core, Clientron has been innovatively developing Advanced Driver Assistance Systems (ADAS), and the applications of Cellular Vehicle-to-Everything (C-V2X). We have helped manufacturers to build up the smart e-Cockpit of vehicles, which has won the favor of major automakers in many regions. In Clientron, the commitment to being the leading supplier to produce user-friendly, secure, reliable, and durable products in the auto industry has never changed.



IVI (In-vehicle Infotainment System)

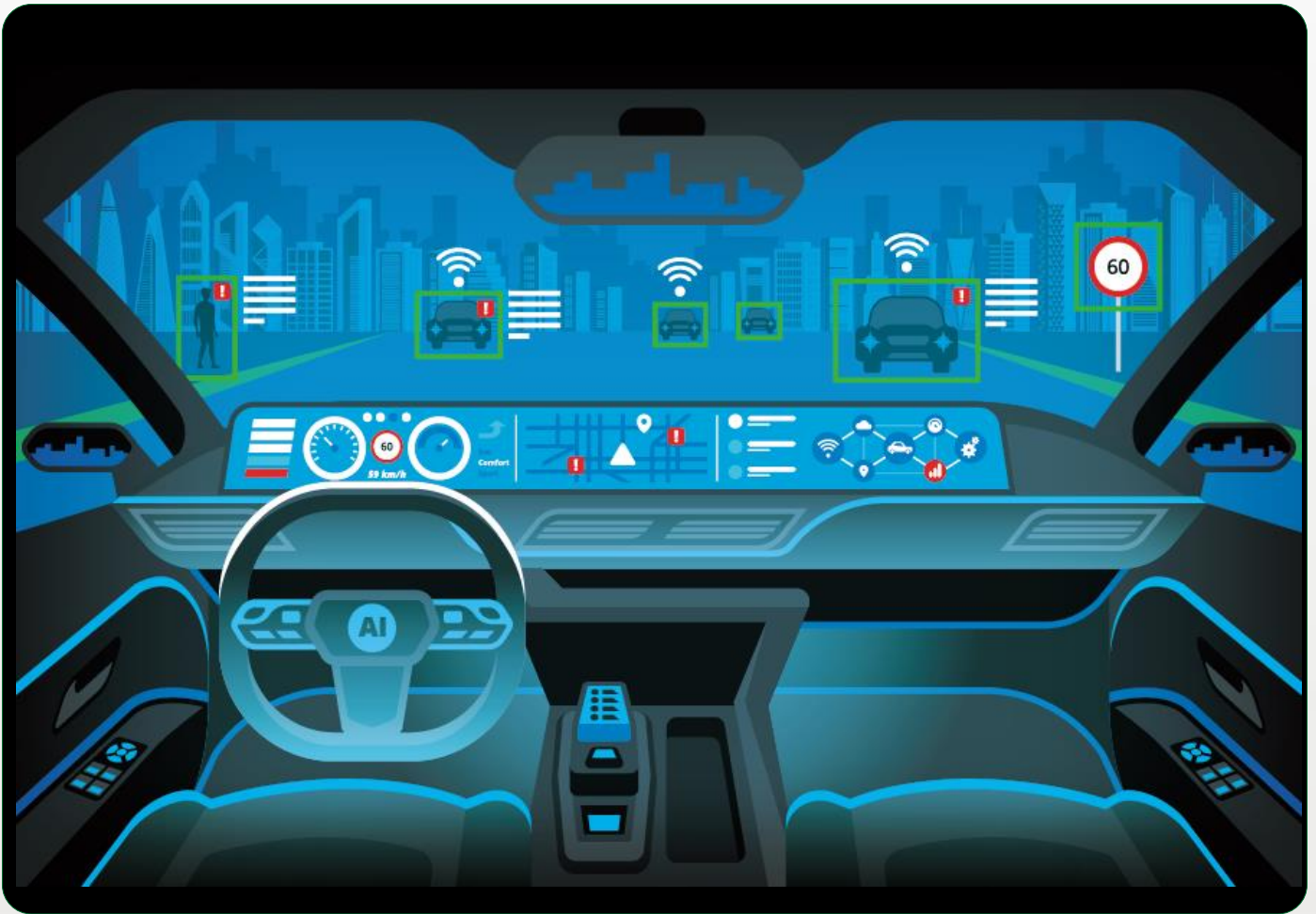
- IVI system supports multi-display integration, and customized user interfaces and functions (Cluster, Navigation, Diagnostic, Entertainment, etc.)
- Support Apple CarPlay & Android Auto
- 5G/4G communication, connecting to the internet, cloud applications
- Support 5G/4G, WiFi connection, GPS, CAN BUS, UART, USB, Touch Panel, etc.



Smart Meter Cluster System

- Display the information on vehicle conditions, central control system, and auxiliary drive system immediately
- 5G/4G communication, the driving information will be simultaneously sent to the cloud information center
- Support 5G/4G, WiFi connection, GPS, CAN BUS, UART, USB, Touch Panel, etc.

Smart e-Cockpit of Electric Vehicles



Vision Assistance System

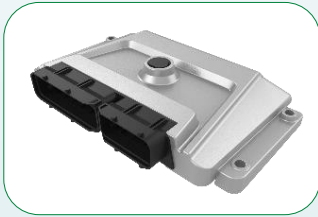
- High-resolution cameras
- 7"/ 10.1" display screen
- Equipped with sensors and the AI algorithm, it can provide MOD (Motion Object Detection), BSD (Blind Spot Detection), the difference of the radius between inner wheels warning



BCM (Body Control Module)

- Control the electronics system: lighting system, air-conditioner, camera, navigation, tire pressure, windshield wipers, etc.
- Able to re-defined the functions of BCM for system integration
- Providing complete and fast diagnostic information on vehicle
- 2-Way CAN BUS, 5-channel wake-up inputs/ outputs, operating voltage: 18V - 32V DC, 37 input channels, 33 output channels (20A, 9A, 3.2A, 2A, etc.)

Smart e-Cockpit of Electric Vehicles



VCU (Vehicle Control Unit)

- VCU is the core of the electronics, battery, and motor integration systems
- Control the high/low power management, motor power output, thermal management, and sensor integration
- Customized function and design for the different vehicles including buses, passenger vehicles, and all-terrain vehicles (ATV)
- Adopt the Model-Based Design(MBD) to implement the AI algorithm and logic structure



AVAS (Acoustic Vehicle Alert System)

- Support the CAN BUS communication system to customize the alert sound and mechanism
- Comply with automotive-grade test
- Ingress Protection Rating: IP67



Steering Wheel Control: OFN + HOD + Heater

- OFN (Optical Finger Navigation) / HOD (Hands Off Detection) / Heating/ Vibration/ Touching functions
- PCBA design and manufacture to customize the function
- Support L2 or higher Autopilot level



E-Shifter

- E-Shifter is shifted by wire
- Support the development of APS (Automated Parking System) and ADAS (Advanced Driver Assistance Systems)
- Support CAN BUS communication system

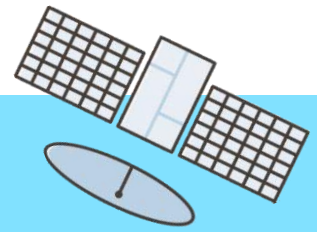
Clientron Corp.

3F., No.75, Sec. 1, Sintai 5th Rd., Sijhih Dist.,
New Taipei City 221, Taiwan (R.O.C.)
<https://www.clientron.com>
TEL: +886-2-2698-7068
Email: service@clientron.com



Smart e-Cockpit of Electric Bus

clientron
公信電子



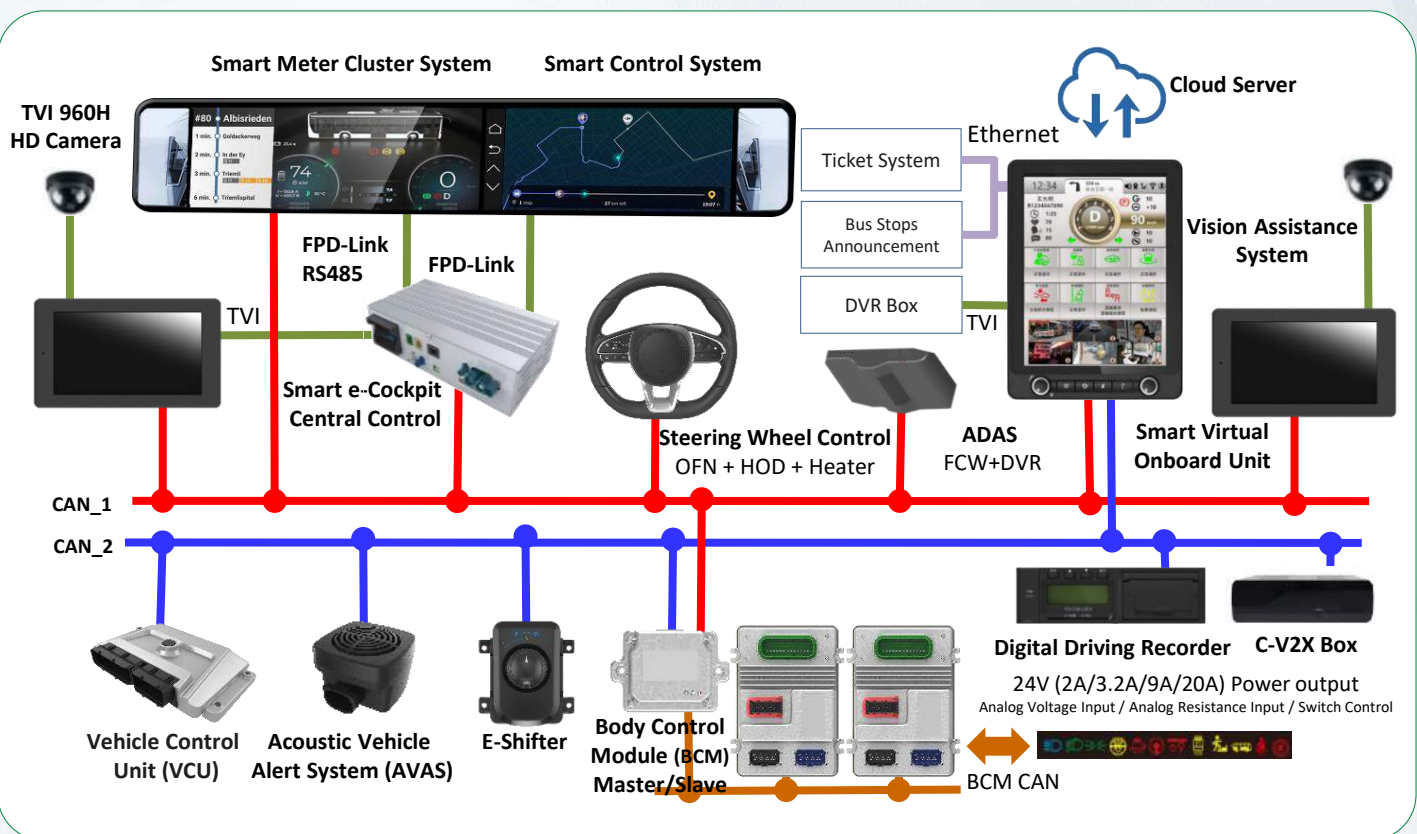
The New Era of Smart Vehicle



Development Platform for
Electric Bus Parts



Smart e-Cockpit of Electric Bus



Based in Taiwan, Clientron has been dedicated to the automotive industry on system integration services and has expertise in the technology of integrating the sub-systems that communicates with all the components and applications within an electric vehicle.

With integrated in-vehicle infotainment systems as the core, Clientron has been innovatively developing Advanced Driver Assistance Systems (ADAS), and the applications of Cellular Vehicle-to-Everything (C-V2X). We have helped manufacturers to build up the smart e-Cockpit of vehicles, which has won the favor of major automakers in many regions. In Clientron, the commitment to being the leading supplier to produce user-friendly, secure, reliable, and durable products in the auto industry has never changed.



Smart Meter Cluster System

- The system integrates the information of battery, motor, and electrical control systems to warn the driver immediately
- 5G/4G communication, instantly sending the driving information to the cloud monitoring center
- Support 5G/4G, WiFi connection, GPS, CAN BUS, UART, USB, Touch Panel, etc.



Smart Control System

- Communicate and control all electronic modules on the bus
- Digitalized the analog signals of the electronic component
- User-friendly Human Machine Interface
- Support 5G/4G, WiFi connection, GPS, CAN BUS, UART, USB, Touch Panel, etc.

Smart e-Cockpit of Electric Bus



Smart Virtual Onboard Unit

- Systems integration such as cameras, sensors, e-shifter, ADAS, etc.
- The modularizing design allows partners to combine several modules or develop applications on the platform
- Simple design to fit different packages of vehicle
- Support Bluetooth & WiFi communication, GPS, Ethernet, CAN BUS, Touch Panel, UART, and video input



Vision Assistance System

- High-resolution cameras
- 7"/ 10.1" display screen
- Equipped with sensors and the AI algorithm, it can provide MOD (Motion Object Detection), BSD (Blind Spot Detection), the difference of the radius between inner wheels warning



Digital Driving Recorder

- Recording the driver's working hours and vehicle-related driving data
- It can provide the supervision department to regularly check the driving record of the vehicle
- The black box of the vehicle provides important evidence for investigation by retrieving the vehicle's data
- Applicable to the Taiwanese Digital Driving Recorder regulation: 16-1.



BCM (Body Control Module)

- Control the electronics system: air-conditioning control, the onboard lighting system, Door Control, relay power, ECAS (Electronically Controlled Air Suspension), etc.
- Able to re-defined the functions of BCM for system integration
- Providing complete and fast diagnostic information on the vehicle
- Flexible to plan the overall layout of the electronic systems in the vehicle (Depending on the requirement, it can deploy up to 8 slaves for each master)
- 2-Way CAN BUS, 5-channel wake-up inputs/ outputs, operating voltage: 18V - 32V DC, 37 input channels, 33 output channels (20A, 9A, 3.2A, 2A, etc.)



VCU (Vehicle Control Unit)

- VCU is the core of the electronics, battery, and motor integration systems
- Control the high/ low power management, motor power output, thermal management, and sensor integration
- Customized function and design for the different vehicles including buses, passenger vehicles, and all-terrain vehicles (ATV)
- Adopt the Model-Based Design(MBD) to implement the AI algorithm and logic structure



AVAS (Acoustic Vehicle Alert System)

- Support the CAN BUS communication system to customize the alert sound and mechanism
- Comply with automotive-grade test
- Ingress Protection Rating: IP67



Steering Wheel Control: OFN + HOD + Heater

- OFN (Optical Finger Navigation) / HOD (Hands Off Detection) / Heating/ Vibration/ Touching functions
- PCBA design and manufacture to customize the function
- Support L2 or higher Autopilot level



E-Shifter

- E-Shifter is shifted by wire
- Support the development of APS (Automated Parking System) and ADAS (Advanced Driver Assistance Systems)
- Support CAN BUS communication system

Clientron Corp.
3F., No.75, Sec. 1, Sintai 5th Rd., Sijhih Dist.,
New Taipei City 221, Taiwan (R.O.C.)
<https://www.clientron.com>
TEL: +886-2-2698-7068
Email: service@clientron.com