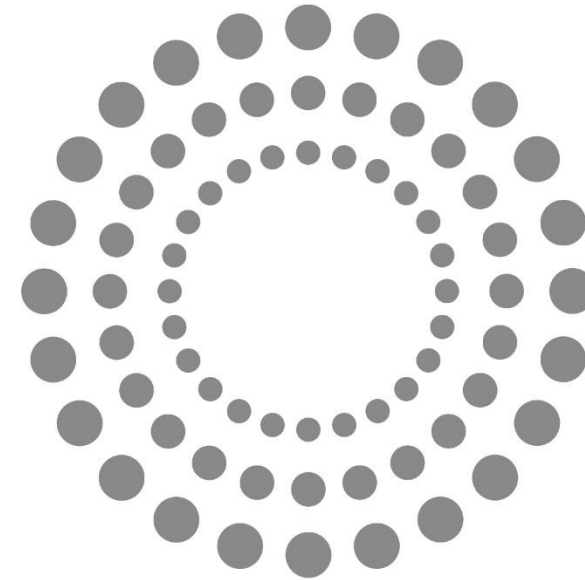




[Lverage Web Site](#)



Enjoy your life





Enjoy Your Life

Liverage Technology is a professional manufacturer of high-quality fiber optical components, transceivers and measurement equipment in fiber optic communications industry. Our mission - Enjoy your life, is to bring the optical broad bandwidth with reasonable price into your life. With more than 30 years of experience, our team members pride ourselves on our innovation and dedication to the highest quality in fiber optical industry.



Core Technologies

The core technologies of Liverage include optical packaging, customized manufacturing technologies and testing equipment manufacturing. Our advanced quality control methods utilize state-of-the-art processing techniques, laser welding, epoxy packaging, module design and testing system integration. Additionally, our trend-setting R&D group develops high-end products for several applications such as defense, aerospace, custom security, oil exploration, etc.

Quality Assurance

Liverage Technology Inc. is an ISO 9001 & ISO 14001 Quality Management Standards (QMS) certified fiber optic technology manufacturer based in Taiwan. Liverage is one of the leading experts in optical packaging technologies, component manufacturing, and quality control. These competitive advantages are fully supported by our advanced processing techniques, laser welding and epoxy packaging, and integrated circuit design technologies.

Pioneering Enabling Technologies for Optical Communications

Innovation has been the driving force behind Liverage's continuing growth. We keep strengthening our reach base to develop the technology and series products for future communication industries

Testing Solution



S20131408888



iBERT XI mini
0.1G ~ 100 Gbps BER Tester

Features

- Hot pluggable
- Standard USB for connecting with PC.
- 40/100 Gbps QSFP, 0.1G~4G / 10G /25Gbps SFP interface module
- Friendly Graphic User Interface (GUI)
- 4Ch Power Meter

Applications

- 40 / 100 Gbps QSFP AOC Qualification
- 10 / 25 Gbps SFP AOC Qualification
- 40 / 100 Gbps QSFP Qualification
- 10 / 25 Gbps SFP Qualification
- 0.1~4 Gbps SFP Qualification

QSFP



S20131438888 40/100G Applications

SFP28



S20131228888 10/25G Applications

SFP



S20131118888 0.1~4G Applications

4G SMA



S20131148888 0.1~4G Applications



4G SFP Checker



10/25G SFP Checker



10G~100G QSFP Checker



Features

- Pocket size design.
- Data Rate : 155 Mbps ~ 4 Gbps
- Standard USB for host link.
- 1 port for duplex LC SFP, 1 port for loopback of Bi-directional SFP.
- Plug-In Optical Power Meter module with SC female connector.
- Automatic wavelength selection base on the SFP serial ID.
- Smart & friendly GUI.

Applications

- SFP Serial ID Reader.
- SFP Digital Diagnostics Monitor.
- Bit Error Rate Tester for verifying SFP.
- Optical power measurement.

Features

- Pocket size design.
- Data Rate : 10 Gbps ~ 25 Gbps
- Standard USB for host link.
- 1 port for duplex LC SFP, 1 port for loopback of Bi-directional SFP, 2 port for AOC SFP.
- Plug-In Optical Power Meter module with SC female connector.
- Automatic wavelength selection base on the SFP+ / SFP28 serial ID.
- Smart & friendly GUI.

Applications

- SFP+ / SFP28 Serial ID Reader.
- SFP+ / SFP28 Digital Diagnostics Monitor.
- Bit Error Rate Tester for verifying SFP+ / SFP28.
- Optical power measurement.

Features

- Pocket size design.
- No warm up time required.
- Connects to a standard PC / laptop with Windows OS via USB connection
- 40G QSFP+ / 100G QSFP28 .
- 10G SFP+ / 25G SFP28 (QSFP to SFP adapter required)
- Full function GUI
- Popular USB connection.

Applications

- QSFP transceiver qualification to verify correct QSFP
- To confirm proper transmit and receive signal levels
- Optical transmitting power measurement.
- Optical reference signal.
- Bit error rate test.
- To verify proper encoding during the manufacturing





Handy Tools

Fiber Checker



- Wavelength: 650 nm
- Range: visibility up to 3 Km
- Universal Connector for testing ST, SC, FC connector
- 2.5 mm to 1.25 mm adaptor for MU, LC connector
- Operating in both CW (Continuous Wave) & Pulse Mode
- Powered by two AAA batteries.
- LED indicator for Power ON and Low Battery.
- Comply with RoHS / CE



Handy Tools Series
Video in YouTube

Power Meter



- Robust & handy design with LED display.
- Precise power measurements for 850 nm / 1310 nm / 1550 nm
- Universal Connector for testing SC, FC ST connector
- 2.5 mm to 1.25 mm adaptor for MU, LC connector
- Powered by two AAA batteries.
- Comply with RoHS / CE
- Support APP connection with Bluetooth.(iOS/Android)

Light Source



- Interchangeable Plug-in module design with LC or SC connector.
- Flexible to change wavelength.
- Operates in CW (Continuous Wave) / 270 Hz / 2 KHz
- Powered by two AAA batteries.
- Comply with RoHS / CE

MPO Checker



- 12F / 16F MPO Connector Checker
- Operating in continuous Wave (CW) mode or Pulse mode
- Wavelength : 650nm
- Universal connector for testing MPO · MPT connector
- Powered by two AAA batteries
- LED indicator for Power ON and Low Battery
- Comply with RoHS / CE



FiTs

Fiber Installation Tools



Features

- Pocket-size design.
- Light Source module for 650 nm / 850 nm / 1300 nm / 1270 ~ 1610 nm CWDM
- Interchangeable module design with SC / PC connector.
- Flexible to change wavelengths of Light Source .
- Power Meter for 850 nm / 1310 nm / 1490 nm / 1550 nm
- Battery inside. Standard mini USB for Charging.
- Economical and easy to use.

Applications

- Maintenance CATV / Telecom / FTTH in fiber optical fiber networks.
- Testing in standard laboratories.
- High throughput quality assurance.



FiTs Series
Video in YouTube



FiTs II

Fiber Installation Tools



Features

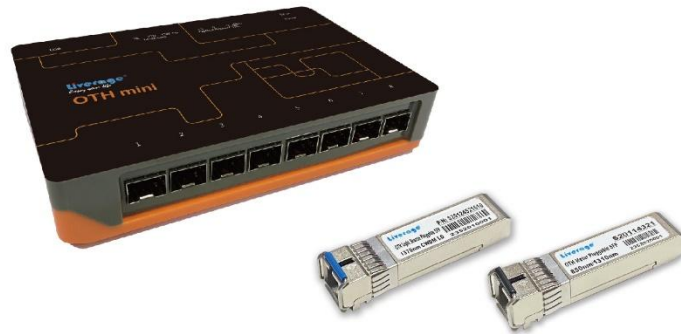
- Pocket-size,handy stand alone design
- +5 ~ -70dBm power meter measurement range with SC/PC connector.
- +3/0/-3dBm optical power adjustable selectable for light source with SC/PC connector.
- Low cost and hot swap for both the light source and power meter module.
- Bluetooth transmission
- Support APP connection with Bluetooth

Applications

- Maintenance CATV / Telecom / FTTH fiber optical networks.
- Standard laboratory applications.
- Passive component fabrication.
- Optical fiber network traffic monitoring systems.
- Optical analog sensing system.



OTH-mini



Features

- +5 ~ -50 dBm optical power meter measurement range with general SC connector.
- +5 ~ -70 dBm optical power meter measurement range with general SC connector. Design for measuring Return Loss
- +3 / 0 / -3 dBm optical power adjustable for light source with SC connector.
- Low cost and hot swap for both the light source and power meter module.
- Simple USB interface with friendly Graph User Interface (GUI)
- Remote commands for controlling and accessing data.

Applications

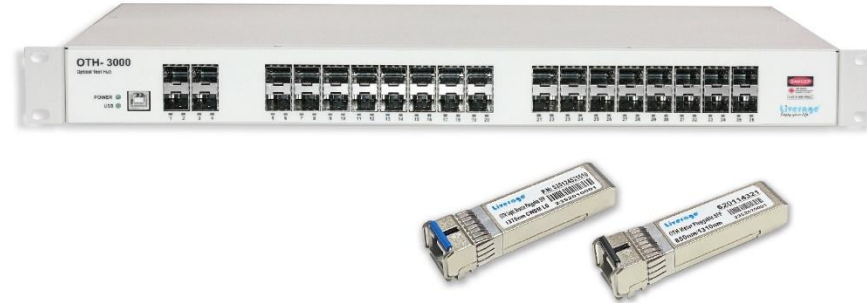
- Maintenance CATV / Telecom / FTTH fiber optical networks.
- Standard laboratory applications.
- Passive component fabrication. Return Loss measurement.
- Optical fiber network traffic monitoring systems.
- Optical analog sensing system.



OTH Series
Video in YouTube



OTH-3000 Configurable Multi Channel Light Source And Power Meter Hub



Features

Your best choice for silicon photonics testing solution.

- 1U 19" rack mount design
- +5 ~ -50 dBm optical power meter module with SC / PC connector.
- +5 ~ -70 dBm optical power meter module with SC / PC connector.
- Design for measuring Return Loss
- +3 / 0 / -3 dBm optical power adjustable and CW / 270 / 2 KHz modulation
- selectable for light source with LC / SC connector.
- USB interface with friendly Graph User Interface (GUI)
- Remote commands for controlling and accessing data.

Applications

- Maintenance CATV / Telecom / FTTH fiber optical networks.
- Standard laboratory applications.
- Passive component fabrication. Return Loss measurement.
- Optical fiber network traffic monitoring systems.
- Optical analog sensing system.



OTH Series
Video in YouTube



Fit II / OTH mini / OTH-3000 Module

Light Source ▲



- Flexible to change wavelength.
- +3 / 0 / -3 dBm optical power adjustable for light source with SC connector.
- Operates in CW (Continuous Wave) / 270Hz / 2KHz.
- Low cost and hot swap for the light source module.
- Remote commands for controlling and accessing data.

Power Meter ▲



- +5 ~ -50 dBm optical power meter measurement range with general SC connector (Multi Mode).
- +5 ~ -70 dBm optical power meter measurement range with general SC connector (Single Mode).
- Low cost and hot swap for the light source module.
- Remote commands for controlling and accessing data.

ePower Meter ▲



- Your best choice for silicon photonics testing solution.
- +5 ~ -50 dBm optical power meter measurement range with general LC connector (Multi Mode).
- +5 ~ -70 dBm optical power meter measurement range with general LC connector (Single Mode).
- The voltage range measured by the optical power meter is 0V~3V, with a universal SMPM connector.
- Low cost and hot swap for the light source module.
- Remote commands for controlling and accessing data.



OTH-4000 Multi Channels LIV Curve Tester ▲



Features

- 1U 19" rack mount design
- LD LIV Curve measurements
- 12-CH DVI Electrical signals 12-CH MPO
- USB interface to link PC and with friendly Graph User Interface (GUI)

Applications

- Standard laboratory applications
- Active component fabrication
- Optical fiber network traffic monitoring systems.
- Optical analog sensing system.



HOT Pet

Features

- 4 Channels immediate Power Meter
- 40G-100Gbps optical transceiver power measurements
- MPO / APC Connector
- LC to MPO Demux adapter design
- Touch panel design

Applications

- 40G SR4/LR4/ER4 optical transceiver power measurements
- 100G PSM4/CWDM4 optical transceiver power measurements
- 100G SR4/LR4/ER4 optical transceiver power measurements



100G Optical Transceiver Power Measurement ▲



HOT Pet II

Features

- 8 Channels immediate Power Meter
- 40G-400Gbps optical transceiver power measurements
- MPO / APC Connector
- LC to MPO Demux adapter design
- Touch panel design

Applications

- 40G SR4/LR4/ER4/ZR4/PSM4/CWDM4 transceiver power measurements
- 100G SR4/LR4/ER4/ZR4/PSM4/CWDM4 transceiver power measurements
- 200G SR4/LR4/ER4/FR4/DR4/SR8/LR8/ER8 transceiver power measurements
- 400G SR4/LR4/FR4/DR4/SR8/LR8/ER8/FR8/DR8 transceiver power measurements



400G Optical Transceiver Power Measurement ▲



HOT Pet Pro

Features

- For high speed 4 CHs power meter measurements.
- SM or MM MPO/APC Connectors.
- LC adapter designed for QSFP LR4 or QSFP CWDM4 Transceiver Module.
- Touch panel design.

Applications

- For 40G / 100G SR4、LR4、ER4、ZR4、CWDM4、PSM4 Transceiver modules output power measurement.
- For 200G SR4、LR4、ER4、FR4、DR4 Transceiver modules output power measurement.
- For 400G SR4、LR4、FR4、DR4 Transceiver modules output power measurement.



400G Optical Transceiver Power Measurement ▲



HOT Pet III

Features

- For high speed 4 CHs or 8 CHs power meter measurements.
- SM or MM MPO/APC Connectors.
- LC adapter designed for LR4、ER4、ZR4、CWDM4 or FR4 Transceiver Module.
- LC to MPO adapter designed for LR8、ER8 or FR8 Transceiver Module.
- Touch panel design.

Applications

- For 40G / 100G SR4、LR4、ER4、ZR4、CWDM4、PSM4 Transceiver modules output power measurement.
- For 200G SR4、LR4、ER4、FR4、DR4、SR8、LR8、ER8 Transceiver modules output power measurement.
- For 400G SR4、LR4、FR4、DR4、SR8、LR8、ER8、FR8、DR8 Transceiver modules output power measurement.
- For 800G SR8、LR8、FR8、DR8 Transceiver modules output power measurement.



800G Optical Transceiver Power Measurement ▲





MPO Tester (12/16/24)

Features

- Easy to check fiber faults by using 650 nm visual red laser
- Range: visibility up to SMF or MMF Fiber 1 km
- 12/16/24F MPO Connector testing
- Highly effective power circuits designed for stable laser power
- Operating in Continuous Wave (CW) Mode or Scan Mode
- Built-in battery for easy carrying



MPO Polarity Tester

Features

- Easy to check fiber faults by using 650 nm visual red laser
- Type A/B/C MPO patch cord and polarity checking.
- Range: visibility up to SMF or MMF Fiber 1 km
- 12/16/24F MPO Connector for testing additional
- Highly effective power circuits designed for stable laser power
- Operating in Continuous Wave (CW) Mode or Scan Mode
- Cost-effective MPO testing solution.
- Built-in battery for easy carrying



Applications

- MPO 12/16/24 fiber polarity
- Type A/B/C/SA/SB/SC MPO patch cord identification
- MPO Patch Cord testing



MPO series
Video in YouTube



MM / SM MPO Light Source (12/16/24)

Features

- No warm up time required
- 12F/16F/24F independent stable emitting laser of 850nm or 1310nm Laser
- 12F · 16F · 24F MPO Connector for testing additional
- Operating in Continuous Wave (CW) Mode or Scan Mode or Manu Mode
- Handheld and rechargeable via USB cable

Applications

- Maintenance CATV / Telecom / FTTH / Data Center fiber optical networks.
- Standard laboratory applications.
- Passive component fabrication.
- Optical fiber network traffic monitoring systems.
- Optical analog sensing system.



MPO series
Video in YouTube



MPO Power Meter (12/16)

Features

- Simply measure the output power of 12 CHs / 16 CHs, suitable for MPO cables or FAN-OUT cables.
- SM MPO-(12/16)/APC or MM MPO-(12/16)/PC Connectors.
- Optional 850 nm / 1300 nm / 1310 nm / 1550 nm power meter.
- Measuring power within -70 dBm ~ +5 dBm ranges.
- Touch panel design.
- USB connected to PC and the measured power values could be recorded into a file

Applications

- Maintenance CATV / Telecom / FTTH / Data Center fiber optical networks.
- Standard laboratory applications.
- Passive component fabrication. Return Loss measurement.
- Optical fiber network traffic monitoring systems.
- Optical analog sensing system



TRANSCEIVER



400 Gbps QSFP-DD SR8 Transceiver

Features

- 8 channels full-duplex transceiver modules
- 8x50G PAM4 VCSEL transmitter
- Transmission data rate up to 53Gbps per channel
- 8x53Gbps PAM4 transmitter and PAM4 receiver
- 8x50G PAM4 retimed 400GAUI-8 electrical interface aligned with IEEE 802.3ba
- Hot Pluggable QSFP-DD form factor
- RoHS compliant



100 Gbps QSFP28 ZR4 Transceiver

Features

- Hot pluggable QSFP28 MSA form factor
- Compliant to IEEE 802.3ba 100GBASE-ZR4
- Up to 80 km reach for G.652 SMF
- Temperature Range 0 to 70°C
- Transmitter: cooled 4 x 25 Gbps LAN WDM EML TOSA (1295.56 nm, 1300.05 nm, 1304.58 nm, 1309.14 nm)
- Receiver: 4 x 25 Gbps APD ROSA
- 4x28G Electrical Serial Interface
- Maximum power consumption 6 W
- Duplex LC receptacle
- Compatible with RoHS

Applications

- 100GBASE-ZR4 Ethernet Links
- Infiniband QDR and DDR interconnects
- Client-side 100G Telecom connections



400 Gbps QSFP-DD AOC

Features

- Hot-pluggable QSFP-DD Type 2 form factor
- Reliable VCSEL array technology using multimode fiber
- Transmission data rate up to 53Gbps per channel
- 8x53Gbps PAM4 transmitter and PAM4 receiver
- Hot Pluggable QSFP-DD form factor
- RoHS compliant



100 Gbps QSFP28 ER4 Transceiver

Features

- Hot pluggable QSFP28 MSA form factor
- Compliant to IEEE 802.3ba 100GBASE-ER4
- Up to 40 km reach for G.652 SMF
- Temperature Range 0 to 70°C
- Transmitter: cooled 4 x 25 Gbps LAN WDM EML TOSA (1295.56 nm, 1300.05 nm, 1304.58 nm, 1309.14 nm)
- Receiver: 4 x 25 Gbps APD ROSA
- 4x28G Electrical Serial Interface
- Maximum power consumption 4.5 W
- Duplex LC receptacle
- Compatible with RoHS

Applications

- 100GBASE-ER4 Ethernet Links
- Infiniband QDR and DDR interconnects
- Client-side 100G Telecom connections





100 Gbps QSFP28 LR4

Features

- Hot pluggable QSFP28 MSA form factor
- Compliant to IEEE 802.3ba 100GBASE-LR4
- Up to 10 km reach for G.652 SMF
- Temperature Range 0 to 70°C
- Maximum power consumption 3.5 W
- Duplex LC receptacle
- Compatible with RoHS



100 Gbps QSFP28 PSM4 Optical Transceiver

Features

- QSFP28 MSA compliant
- Compliant to IEEE 802.3bm 100GBASE PSM4
- Four independent full-duplex channels
- Supports 103.1Gbps aggregate bit rate
- Up to 2 km reach for G.652 SMF
- 4x25G electrical interface OIF CEI-28G-VSR
- Maximum power consumption 3.5W
- Operating case temperature: 0 to 70 °C
- RoHS compliant

Applications

- 100G Ethernet links
- Infiniband QDR and DDR interconnects
- Datacenter and Enterprise networking



100 Gbps QSFP28 CWDM4 2 km Optical Transceiver

Features

- QSFP28 MSA compliant
- 4 CWDM lanes MUX/DEMUX
- Supports 103.1Gbps aggregate bit rate
- Compliant with 100G CWDM4 MSA Rev1.1
- Up to 2 km transmission on single mode fiber SMF with FEC
- Operating case temperature: 0 to 70 °C
- 4x25G electrical interface OIF CEI-28G-VSR
- Maximum power consumption 3.5 W
- Duplex LC connector
- RoHS compliant

Applications

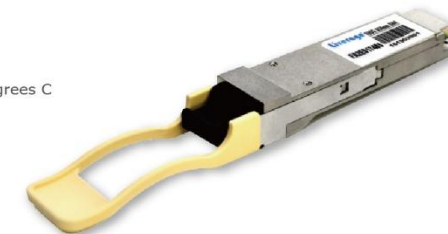
- Data Center Interconnect
- 100G Ethernet
- Infiniband QDR and DDR interconnects
- Enterprise networking



100 Gbps QSFP28 SR4

Features

- 4 independent full-duplex channels
- Up to 28 Gbps data rate per channel
- QSFP28 MSA compliant
- Up to 100 m OM4 MMF transmission
- Operating case temperature: 0 to 70 Degrees C
- Maximum power consumption 2 W
- MPO optical connector
- RoHS-6 compliant





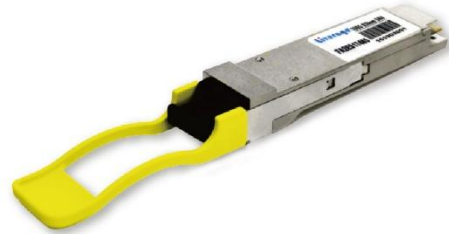
100Gbps QSFP28 DRI Optical Transceiver

Features

- QSFP28 MSA compliant
- Compliant to IEEE 802.3cu.
- Non-hermetic package design.
- LC connector.
- Up to 500 m transmission on single mode fiber with FEC.
- RoHS compliant

Applications

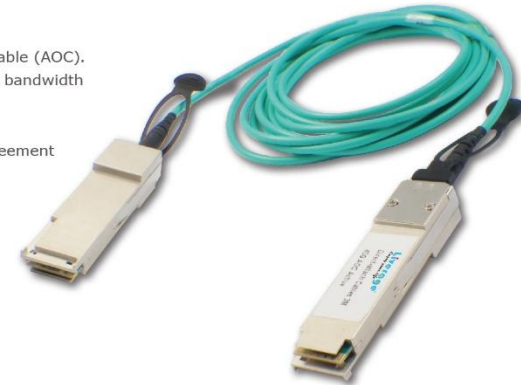
- Data Center Network.



100 Gbps QSFP28 AOC

Features

- High data rate parallel active optical cable (AOC).
- Overcome the traditional copper cable bandwidth limitation.
- Multi selection for the length of cable
- Comply with QSFP28 Multi-Source Agreement (MSA).
- Excellent EMI Shielding.



100 Gbps QSFP28 DAC

Features

- Support aggregable data rates of 100Gbps
- Support 100G to 4X25G Ethernet interoperability
- Low insertion loss and cross talk
- Excellent EMI Shielding





25 Gbps SFP28 Dual / Bi-directional Module

Features

- SR for MM fiber.
- LR, ER for SM fiber.
- Complaint with SFF-8402 SFP28 MSA
- Up to 25.78 Gb/s data links
- Support 25G Ethernet
- Support CPRI Option 10 @ 24.33Gbps
- Class 1 Laser International Safety Standard IEC-60825 Compliant
- All-metal housing for superior EMI performance

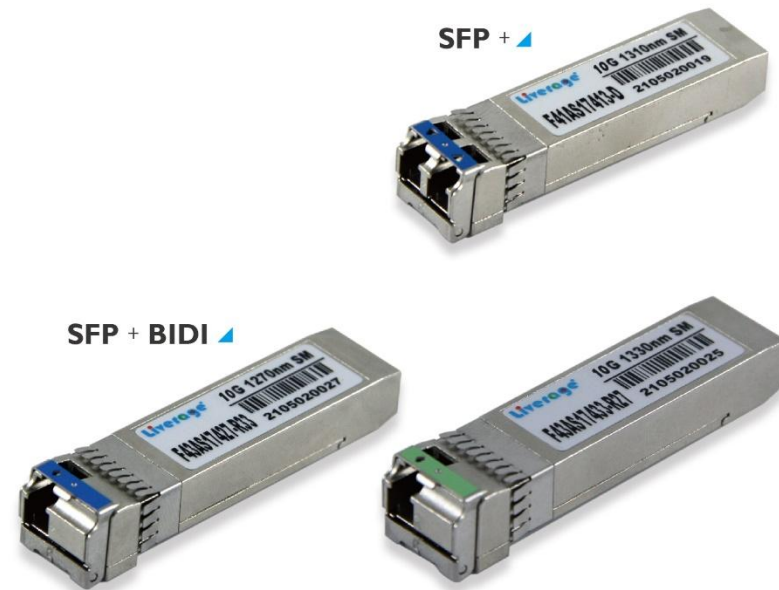
Applications

- High-speed storage area networks
- Custom high-speed data pipes
- 25GE Ethernet
- eCPRI and CPRI



10 Gbps SFP+ Dual / Bi-directional Module

- Comply with SFP+ MSA, IEEE802.3ae, RoHS Compliant.
- SR for MM fiber.
- LR, ER, ZR for SM fiber.
- Digital Diagnostic function.
- Laser class 1 product which complies with IEC-60825, FDA 21 CFR 1040.10 and 1040.11.
- Comply with SONET OC-192, 10 G Ethernet, and 10 G FC





Dual Fiber SFP Transceiver Module

Features

- VCSEL 850 nm / LED 1300 nm / FP or DFB 1310 nm / FP or DFB 1550 nm
- 100 Mbps ~ 4.25 Gbps
- RoHS Compliant
- Comply with SFP MSA
- Comply with SONET / SDH , Fiber Channel, or Gigabit Ethernet standards
- Class 1 laser products, EN60825, and En60950
- 0.5 Km ~ 110 Km link distance
- Metal enclosure, low EMI
- Low Power Dissipation

Applications

- Metro Access Rings
- Point-to-Point networking



Dual Fiber SFF Transceiver Module

Features

- VCSEL 850 nm / LED 1300 nm / FP or DFB 1310 nm / FP or DFB 1550 nm
- 100 Mbps ~ 4.25 Gbps
- RoHS Compliant
- Comply with SFF MSA
- Comply with SONET / SDH standards
- Class 1 laser products, EN60825, and En60950
- 0.5 Km ~ 110 Km link distance
- Metal enclosure, low EMI
- Low Power Dissipation

Applications

- Metro Access Rings
- Point-to-Point networking



Bi-directional Module

Features

- Industrial Temperature and Supply Voltage Operation
- OBSAI rates 6.144 Gbps, 3.072 Gbps, 1.536 Gbps
- CPRI rates 7.3728 Gbps, 4.9152 Gbps, 2.4576 Gbps, 1.2288 Gbps
- IEC 60825-1 Class 1 laser eye safe
- Comply with Fibre Channel and Gigabit Ethernet applications

Applications

- Wireless and cellular base station system interconnect



Features

- FP or DFB 1310 nm / FP or DFB 1550 nm
- 100 Mbps ~ 2.5 Gbps & 10 Km ~ 80 Km link distance
- RoHS Compliant
- Comply with SFP MSA SONET / Ethernet / Fiber Channel standards
- Class 1 laser products, EN60825
- Metal enclosure, low EMI

Applications

- Metro Access Rings
- Point-to-Point networking
- PON Applications



Features

- FP or DFB 1310 nm / FP or DFB 1550 nm
- 100 Mbps ~ 2.5 Gbps & 10 Km ~ 80 Km link distance
- RoHS Compliant
- Comply with SFF MSA SONET / Ethernet / Fiber Channel standards
- Class 1 laser products, EN60825, and EN60950
- Metal enclosure, low EMI





CWDM Module

Features

- CWDM 1270 nm, 1290 nm, 1310 nm, 1330 nm, 1350 nm, 1370 nm, 1390 nm, 1410 nm, 1430 nm, 1450 nm, 1470 nm, 1490 nm, 1510 nm, 1530 nm, 1550 nm, 1570 nm, 1590 nm 1610 nm
- 100 Mbps ~ 4.25 Gbps
- RoHS Compliant
- Comply with SFP MSA
- Comply with SONET / Ethernet / Fiber Channel standards
- Class 1 laser products, EN60825, and EN60950
- 20 Km ~ 80 Km link distance
- Hot pluggable
- Metal enclosure, low EMI
- Low Power Dissipation

Applications

- Metro Access Rings
- Point-to-Point networking
- PON Applications

SFP



3G-SDI Transceiver

Features

- SMPTE 297-2006 Compatible
- 50Mbps~3Gbps with up to 10 km
- Support Video Pathological Patterns for SD-SDI, HD-SDI and 3G-SDI
- Compliant with SFP MSA and SFF-8472 with duplex LC connector
- Digital Diagnostic Monitoring Interface

Applications

- SMPTE 297-2006 Compliant Electrical-to-Optical Interfaces
- 3G Video system



Features

- CWDM 1270 nm, 1290 nm, 1310 nm, 1330 nm, 1350 nm, 1370 nm, 1390 nm, 1410 nm, 1430 nm, 1450 nm, 1470 nm, 1490 nm, 1510 nm, 1530 nm, 1550 nm, 1570 nm, 1590 nm 1610 nm
- 100 Mbps ~ 4.25 Gbps
- RoHS Compliant
- Comply with SFF MSA
- Comply with SONET / Ethernet / Fiber Channel standards
- Class 1 laser products, EN60825, and EN60950
- 20 Km ~ 80 Km link distance
- Metal enclosure, low EMI
- Low Power Dissipation

Applications

- Metro Access Rings
- Point-to-Point networking

SFF



12G-SDI Transceiver

Features

- SMPTE 2082, SMPTE 424M, SMPTE 292M, SMPTE 259M, and DVB-ASI Compatible
- 50Mbps~12Gbps with up to 10 km
- Support Video Pathological Patterns for HD-SDI, 3G-SDI, 6G-SDI, and 12G-SDI
- Compliant with SFP MSA and SFF-8472 with duplex LC connector
- Digital Diagnostic Monitoring Interface

Applications

- SMPTE 2082 Compliant Electrical-to-Optical Interfaces
- 3G/12G Video system





DVI Extend Modules

Features

- 4 / 2 / 1 port DVI Extend Module
- Single LC Receptacle Optical Interface
- Single-Mode and Multi-Mode Fiber Application
- Support Long Distance and High Resolution Image Transmission
- Support Video Resolution up to 1920x1200 / 60Hz or 1080p for HD TV
- Indicate the Transmit and Receiver Signal Status
- Compact Size for Optical DVI Extender (HxWxD : 14.6mm x 39.0mm x 53.9mm)
- Single + 5 V Power Supply
- Metal Enclosure and Low Power Consumption
- RoHS Compliant

Applications

- HD Video Extension
- Security system connection.
- Audio & Video System connection



mmWave RoF

SR mmWave Radio over Fiber (OMI - OM4 MMF)

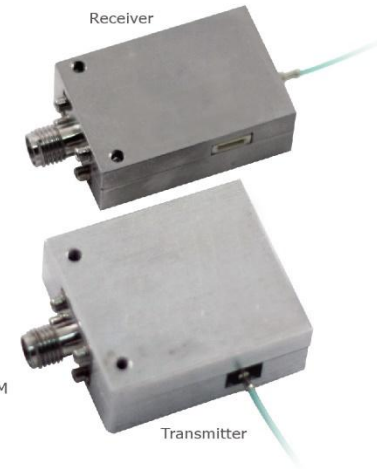
LR mmWave Radio over Fiber (9um SMF)

Features

- Frequency ranges from 24GHz to 30GHz
- Extremely low noise figure
- Ultra-low power: 25 mW at Tx, 250 mW at Rx
- Support FR2 (n257, n258, n261) band with 64-QAM OFDM signal up to 400MHz data bandwidth
- Small form factor
- Simplified configuration and Cost-effective
- Customized optical/electrical I/O interface and mechanical outline

Applications

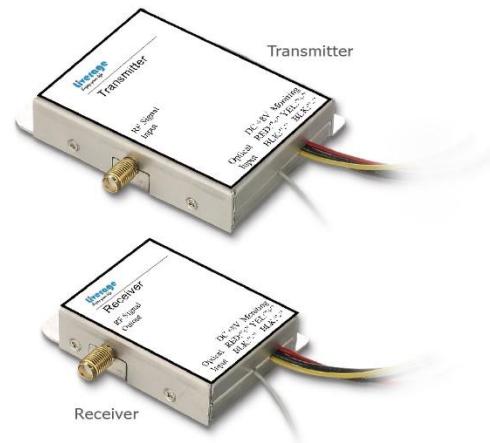
- Small Cell System
- Distributed Antenna System (DAS)
- Base Station
- Remote Antenna
- RF Links via Fiber



RoF

Features

- 1310 nm un-cooled DFB Laser
- Low conversion loss
- Wide dynamic range
- Automatic optical power control
- Wide operating temperature range -20°C to +70°C
- Fiber pigtail package with a customized connector



OSA

TOSA

Features

- Visible LD / VCSEL LD / FP LD / DFB LD / CWDM LD
- Uncooled
- Wide operating temperature
- Packaged in pigtail module and receptacle module

Applications

- SONET OC-3 / OC-12 / OC-48 / OC-192
- Fiber Channel 1x / 2x / 4x / 8x and 10GFC
- Fast / Gigabit / 10Gigabit Ethernet



BOSA

Features

- Pigtailed Fiber or Receptacle type Bi-directional Transmission
- Integrated Wavelength Division Multiplexer (WDM)
- MQW-FP LD / DFB / CWDM
- Uncooled operation -40 ~ +85°C
- PD-TIA / APD-TIA Receiver

Applications

- Optical Communication system
- Gigabit Ethernet links
- Fiber Channel links
- SONET / SDH links



ROSA

Features

- Photo diode / PD-TIA / APD-TIA
- Uncooled
- Wide operating temperature
- Packaged in pigtail module and receptacle module

Applications

- SONET OC-3 / OC-12 / OC-48 / OC-192
- Fiber Channel 1x / 2x / 4x / 8x and 10GFC
- Fast / Gigabit / 10Gigabit Ethernet
- Power Meter

